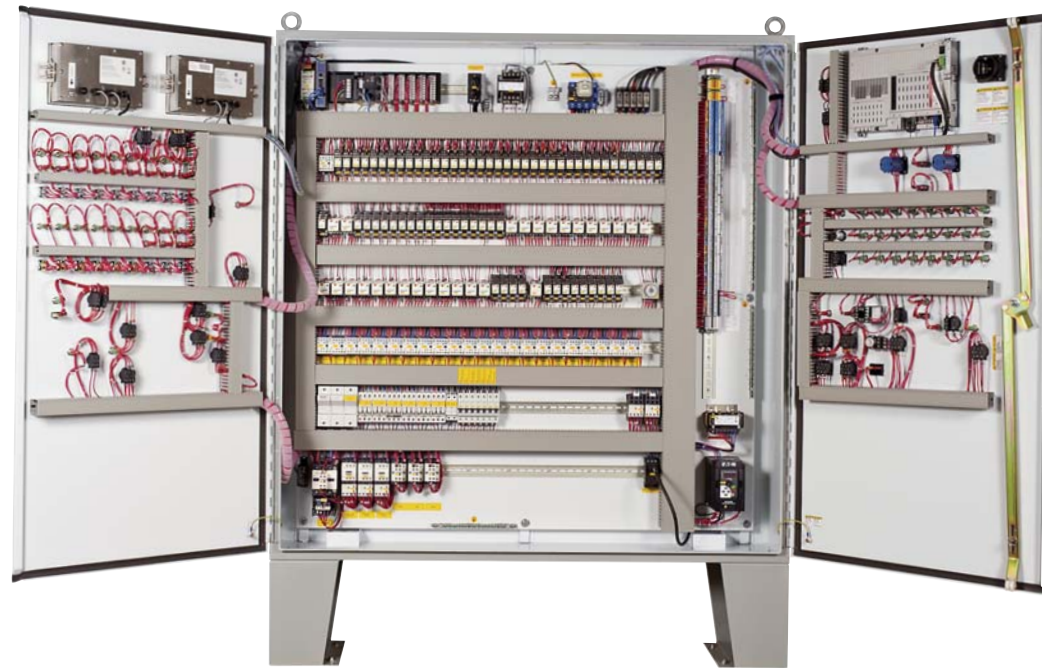
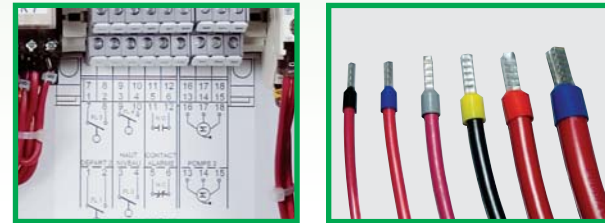




Features (continued)

- Systematic use of ferrule wire connectors on all wire assemblies for easier, faster and more reliable connections;
- Computer assisted design (CAD) of electrical schematics;
- Use of self-adhesive identification stickers allowing quick localisation of connection terminals for easy and accurate on site installation;
- 24 hours/7 days a week service assistance;
- Availability of different power supply voltage configurations: 208, 240, 480, 600 Vac;
- Single phase circuits protected by breakers;
- Long lasting LED lights for increased light life span;
- Individual indicator lights for motor overload fault;
- Finger safe components preventing accidental contact with live circuits.



Automated feed batching system



Designed for efficiency and simplicity of use

Multico Electrique Inc.

1000, Bergeron street, Drummondville (Quebec) Canada J2C 0C1

Tel.: 819 477-6777 • Fax: 819 478-0198

E-Mail: multico@multicoelectric.com

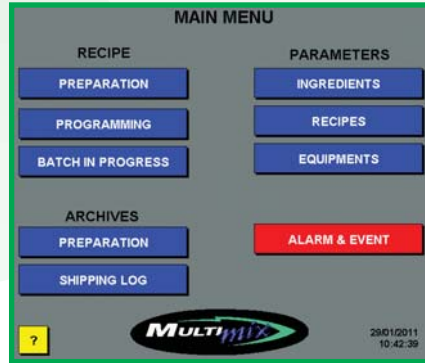
Multico Electrique Inc. reserves the right to modify, at all times, the manufacturing and/or the characteristics and /or the design of its products without prior warning.

General presentation

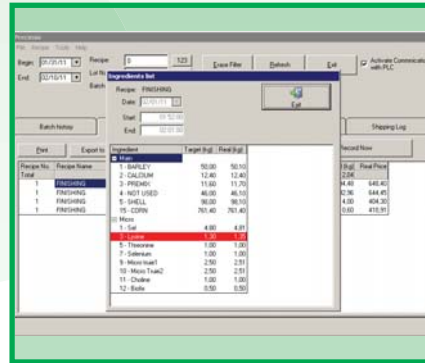


This new second generation **MULTICO** system has taken over from the original version that had first been successfully introduced on the market in 1995. Since then, we have developed different kinds of feed batching systems that we have automated over the years. This new version is meant to be both efficient and simple of use allowing precise and uniformly repeatable feed preparation. An interesting innovation of this new version is the remote access via Internet and traceability of the feed mixing recipe data. This new system shares the same rugged programmable logic controller (PLC) that has built the reputation of the first generation. These elements and many others that you will discover in the following pages will contribute to the performance and the profitability of your **MULTICO** system.

Simple and easy to use menus

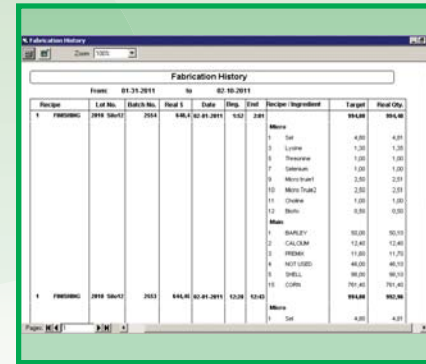


Possibility of up to 255 different recipes with the Basic System

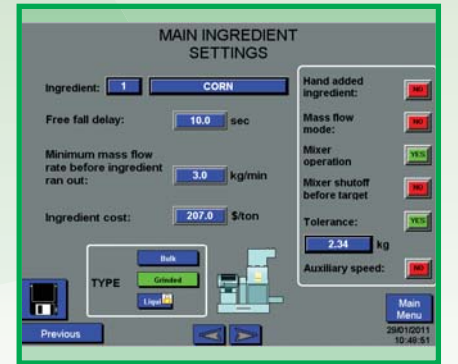


Detailed report of each lot mixed (color coded for rapid identification of ingredients under or over the admissible tolerances)

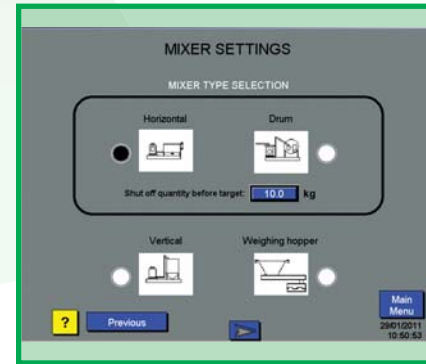
Printing window for detailed reporting of mix recipes



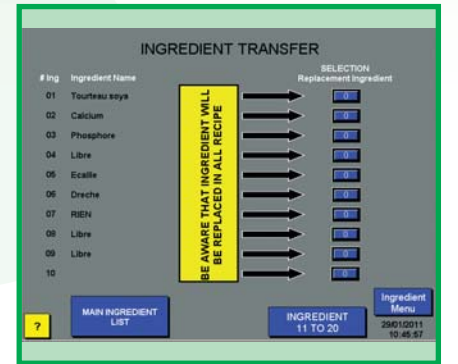
Improved simplicity and settings of system parameters such as ingredients (up to 50 main ingredients & up to 50 micro ingredients)



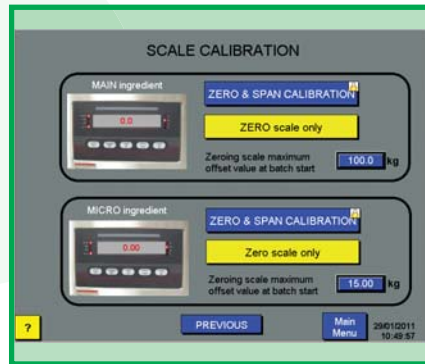
Adaptable to any kind of feed mixer or weighing hopper



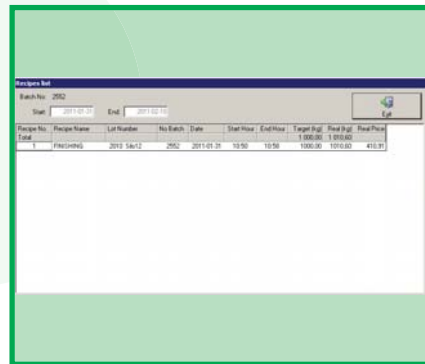
Program allowing for the transfer of an ingredient towards another without having to program new recipe configurations



Weighing indicator calibration menu accessible directly from the operator interface



Traceability and history of mix and distribution (shipping logbook)

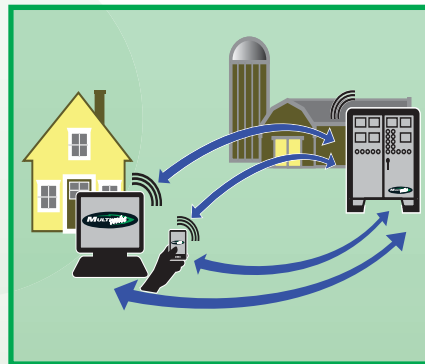


Fast and easy filling of data allowing quick information retrieval by dates and recipe numbers

Inventory follow-up system allowing the confirmation of quantities received and inventory zeroing



Remote access via Internet from a PC or Intelligent Cell Phone



Quick glance graphics allowing rapid visualization of progression of recipe mix



Features

- Industrial programmable logic controller (PLC);
- 64K color touch screen operator interface;
- Windows XP embedded operating system;
- Password protected secured menus access;
- Integrated control for bucket elevator electrical distributor;

- Type 4X Rice Lake stainless steel digital weighing indicator;
- Programmed recipes archiving system;
- Excel spreadsheet data exportation (.csv);
- Variable speed controller for mill feeder;
- Variable speed controller for blower feeder.