



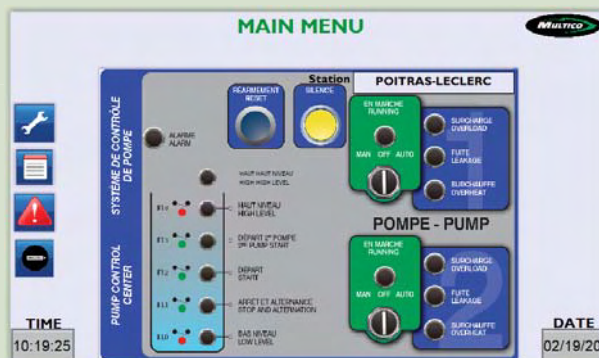
PANELS FOR WASTEWATER PUMPING STATION



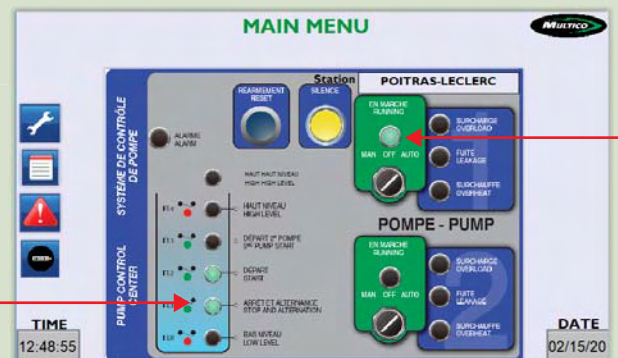
Multico is innovating further by adding a remote access control system for wastewater pumping processes. For more than 30 years, the company has never stopped making improvements for wastewater pumping system in simplex, duplex or triplex design, in order to better meet the needs and requirements of its customers.

The introduction of the new control system now allows remote access, via the internet, to the pumping control system while accelerating the response time in the event of an alarm. Alarm messages can now be sent to multiple users at a time, either by standard email or text messages. The alarm log also allows viewing of alarms archived by the controller. All these new features remain very affordable, do not require any particular computer knowledge to be used and are very intuitive to navigate through.

Real time pump operating status



Simple main menu with relevant and visible information at a glance

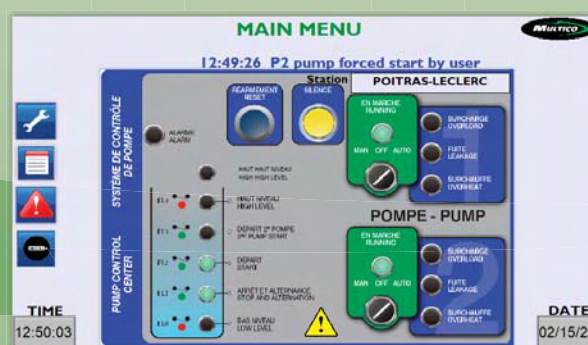


Change of states of the level switches in real time

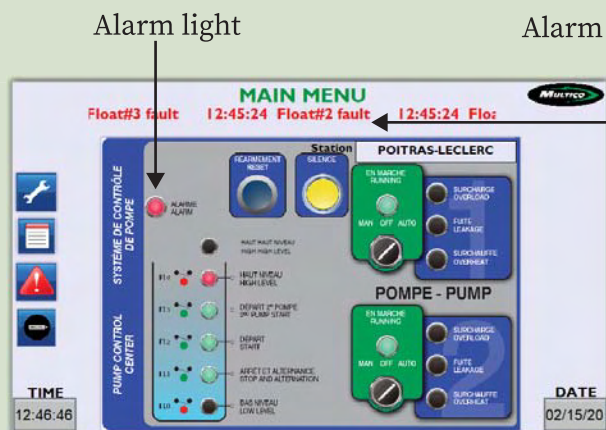
ALARM RECORDER			
DATE	TIME	DESCRIPTION	
42	02/14/20	18:13:46	Float#2 fault
41	02/14/20	18:13:25	HIGH LEVEL
40	02/14/20	18:13:03	Float #1 fault
39	02/14/20	18:12:39	Float#2 fault
38	02/14/20	18:12:18	Float #1 fault
37	02/14/20	17:26:24	Problème flotte #1
36	02/14/20	17:20:43	Problème flotte #1
35	02/14/20	17:17:05	Faute flotte de bas niveau
34	02/14/20	17:16:07	Problème flotte #1
33	02/14/20	17:12:25	Problème flotte #1
32	02/14/20	17:12:25	Faute flotte de bas niveau
31	02/14/20	17:11:24	Problème flotte #2
30	02/14/20	17:11:23	Problème flotte #1

Alarm log and events recorder for the last 30 days

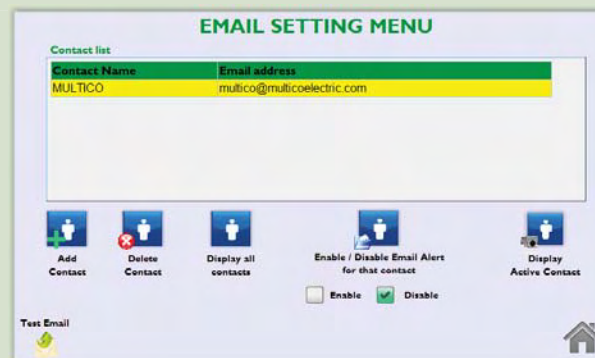
EVENTS RECORDER			
TIME	DATE	DESCRIPTION	
74	11:26:41	02/12/20	P1 + P2 simultaneous operation end
73	11:26:21	02/12/20	Beginning of P1 + P2 simultaneous operati
72	11:26:13	02/12/20	P1 + P2 simultaneous operation end
71	11:25:52	02/12/20	Beginning of P1 + P2 simultaneous operati
70	09:39:04	02/12/20	P1 + P2 simultaneous operation end
69	09:38:58	02/12/20	Beginning of P1 + P2 simultaneous operati
68	09:38:51	02/12/20	P1 + P2 simultaneous operation end
67	09:38:46	02/12/20	Beginning of P1 + P2 simultaneous operati
66	09:38:37	02/12/20	P1 + P2 simultaneous operation end
65	09:38:32	02/12/20	Beginning of P1 + P2 simultaneous operati
64	09:38:25	02/12/20	P1 + P2 simultaneous operation end
63	09:38:19	02/12/20	Beginning of P1 + P2 simultaneous operati
62	09:37:59	02/12/20	P1 + P2 simultaneous operation end
61	09:37:48	02/12/20	Beginning of P1 + P2 simultaneous operati



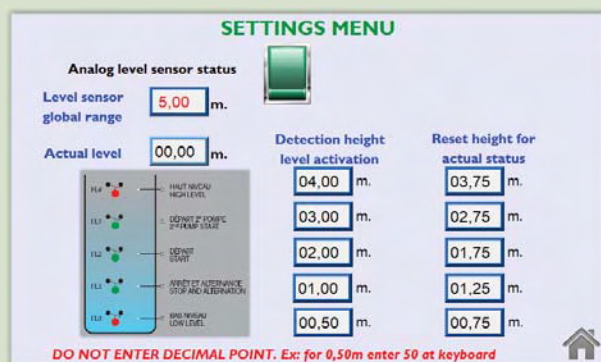
Remote acces available to force running operation for both pumps



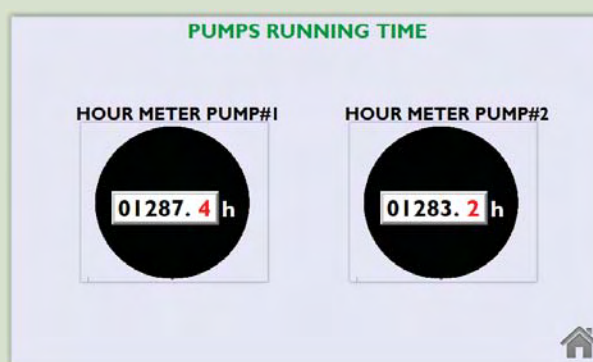
Alarm indicators and scrolling message in the main menu



Email setting menu for easy addition or removal from the user list



Analog level sensor setting window to replace conventional floats



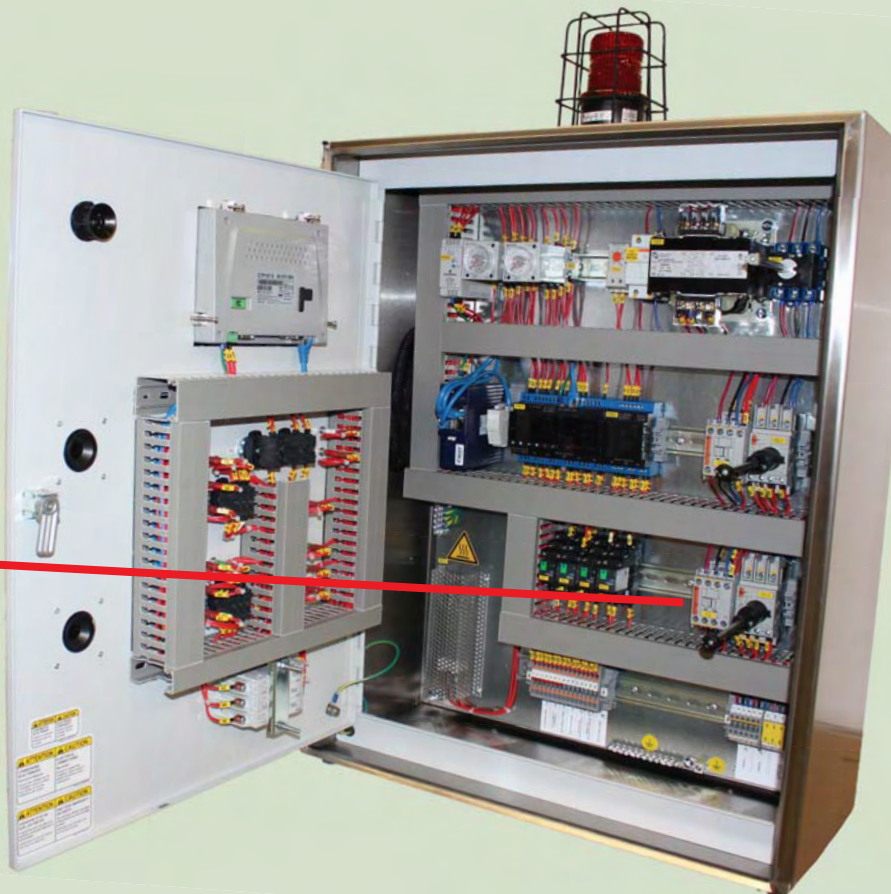
Operating hour meter for each pump

STANDARD FEATURES

- Industrial Nano PLC with operator interface and 7" colour touch screen;
- VPN industrial router with secure connection for remote internet access;
- Remote viewing of HMI on mobile phone or computer;
- Possibility of alarm remote reset;
- Contacts list address book for sending alarm messages and texts to selected users;
- Possibility of acquiring data of certain parameters;
- Float operated mechanical switch or analog level sensor operation;
- Alternating of floats and pumps in the event of malfunction to maintain pumping;
- No subscription fees required for remote access option;
- Various supply voltages ranging from 120 Vac @ 600 Vac, 1 or 3 phases;
- 24 Vdc voltage control circuit;
- Touch-safe components;
- Economical and reliable solution.

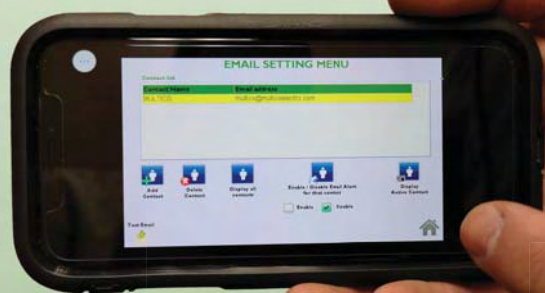


Torque adjustment on power circuits (yellow marks)



OPTIONS

- Inner panel door;
- Soft starter;
- Stroboscopic alarm light;
- Intrinsic circuits;
- Variable frequency drive (VFD);
- GSM router mobile access, Wi-Fi;
- Phase loss and inversion detector
- Heater with protective grid and adjustable thermostat;
- Type 1, 3R, 4X and 12 metal or polymeric material enclosure;
- Ammeter and/or voltmeter with phase selector;



Multico Electrique inc.

1000 Bergeron street, Drummondville (Quebec) Canada J2C 0C1

Tel. : 819 477-6777 • Fax : 819 478-0198

E-Mail : multico@multicoelectric.com

Web : www.multicoelectric.com

Multico Electrique Inc. reserves the right to modify, at all times, the manufacturing and/or the characteristics and /or the design of its products without prior warning.